

# From BC MoE Area Standards (05/2012)

Industrial Education	
Drafting	120 m <sup>2</sup>
Technology (existing Electricity/Electronics)	140 m <sup>2</sup>
Metalwork (use in determining existing cap.)	200 m <sup>2</sup>
Mechanics	230 m <sup>2</sup>
Construction (Wood)	275 m <sup>2</sup>

## 2.2.3 Area Measurement

### Room or Module Areas

Room or module area will be measured net within the inside surfaces of main enclosing walls and partitions.

### Undefined Boundaries

Sometimes the boundary between circulation and other spaces such as libraries is not clearly defined. For calculation of allowable areas when this is so, passageways shall be assumed to be not less than 2 m wide where circulation is likely.

### Mezzanines

With the exception of Industrial Education mezzanine storage, mezzanines shall be measured and considered as normal floor space

## 2.6.4 Industrial Education Covered Work Area

In addition to the allowable areas for Industrial Education a roofed, fenced, and paved work area not exceeding 65 m<sup>2</sup> may be added to each construction, mechanics and middle school general shop. The area of the sawdust extraction equipment room may included either in the covered work area or in the construction shop allowable area, at School Board discretion.

Covered work areas shall not be counted within the gross building area.

### Gross Area

The gross area of a building floor is defined as the floor area within the inside of the exterior walls, plus a standard allowance calculated by multiplying the building perimeter (measured at the interior face) times 150 mm.

The following area calculations shall be included in the definition of facility gross floor area:

- stair openings, measured at the first floor, including stairs to rooftop penthouses
- elevator and duct shafts measured at each floor
- mezzanines including access stairs
- mechanical and electrical spaces, including all penthouse, basement and mezzanine locations (service spaces to be identified separately)
- galleries and suspended walkways, including access stairs
- all other usable or accessible floor areas.

Excluded areas from the calculations are as follows:

- industrial education storage mezzanines
- crawl spaces or service tunnels
- elementary covered play areas
- industrial education covered work areas.

Sheet List	
Sheet Number	Sheet Name

A0	Generic Woodshop
A101	Generic Woodshop Floor Plan
A101.1	Safety Zones
A102	Woodshop Colour Floorplan
A103	Table Layout
A104	Mobile Equipment
A105	Sinks and Entrance
A106	CNC Room
A107	Chopsaws
A108	Area
A109	Metric Details
A110	3D Views

Room Schedule		
Name	Area	Metric

Shop Floor	2655 SF	247 m <sup>2</sup>
Finishing	133 SF	12 m <sup>2</sup>
CNC	164 SF	15 m <sup>2</sup>



BRITISH COLUMBIA  
TECHNOLOGY EDUCATION ASSOCIATION

www.bctea.org

BCTEA

Approved Woodshop Design

No.	Description	Date

Generic Woodshop

Project number V1

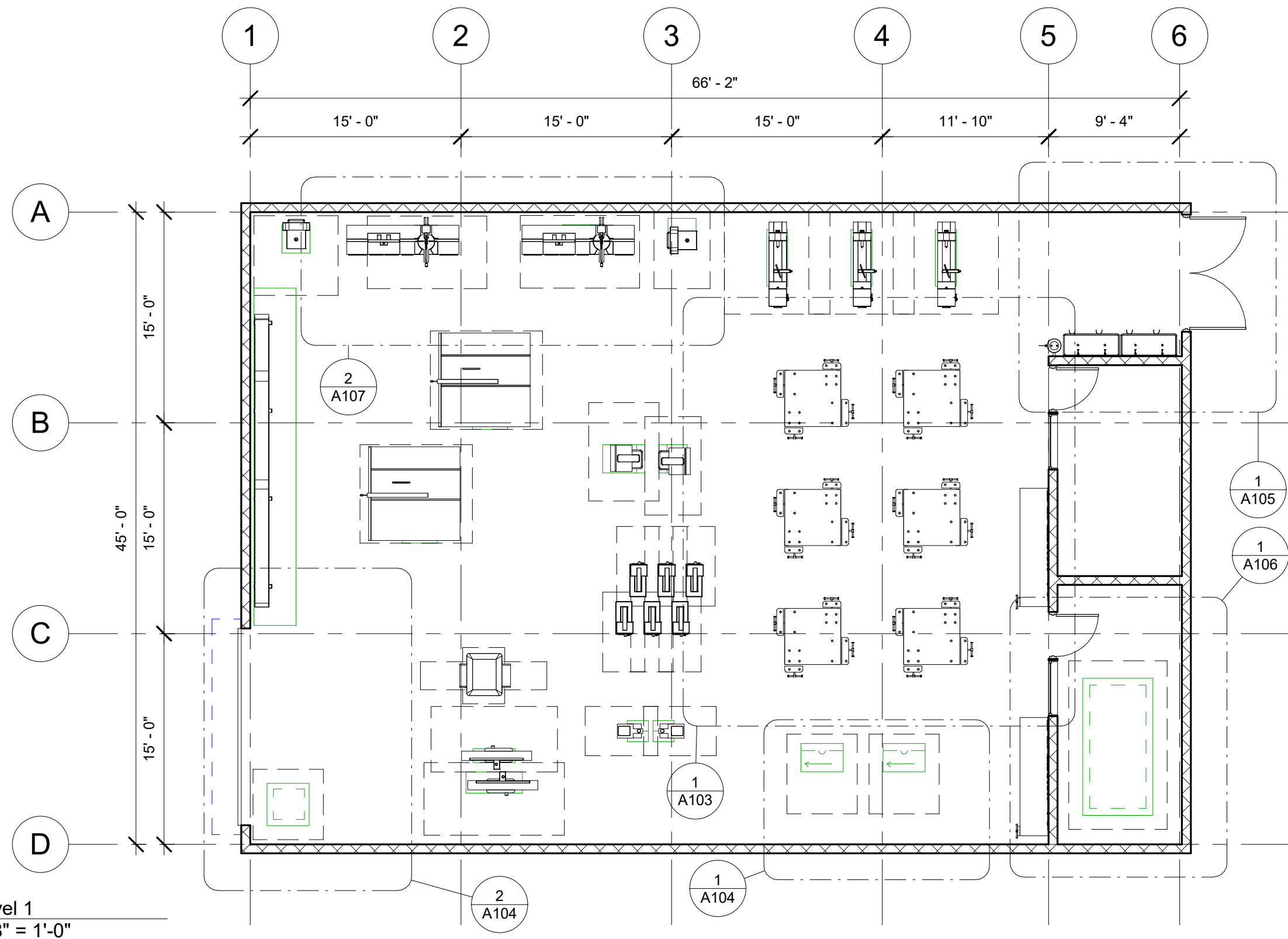
Date June 2017

Drawn by Peter Halim

Checked by Checker

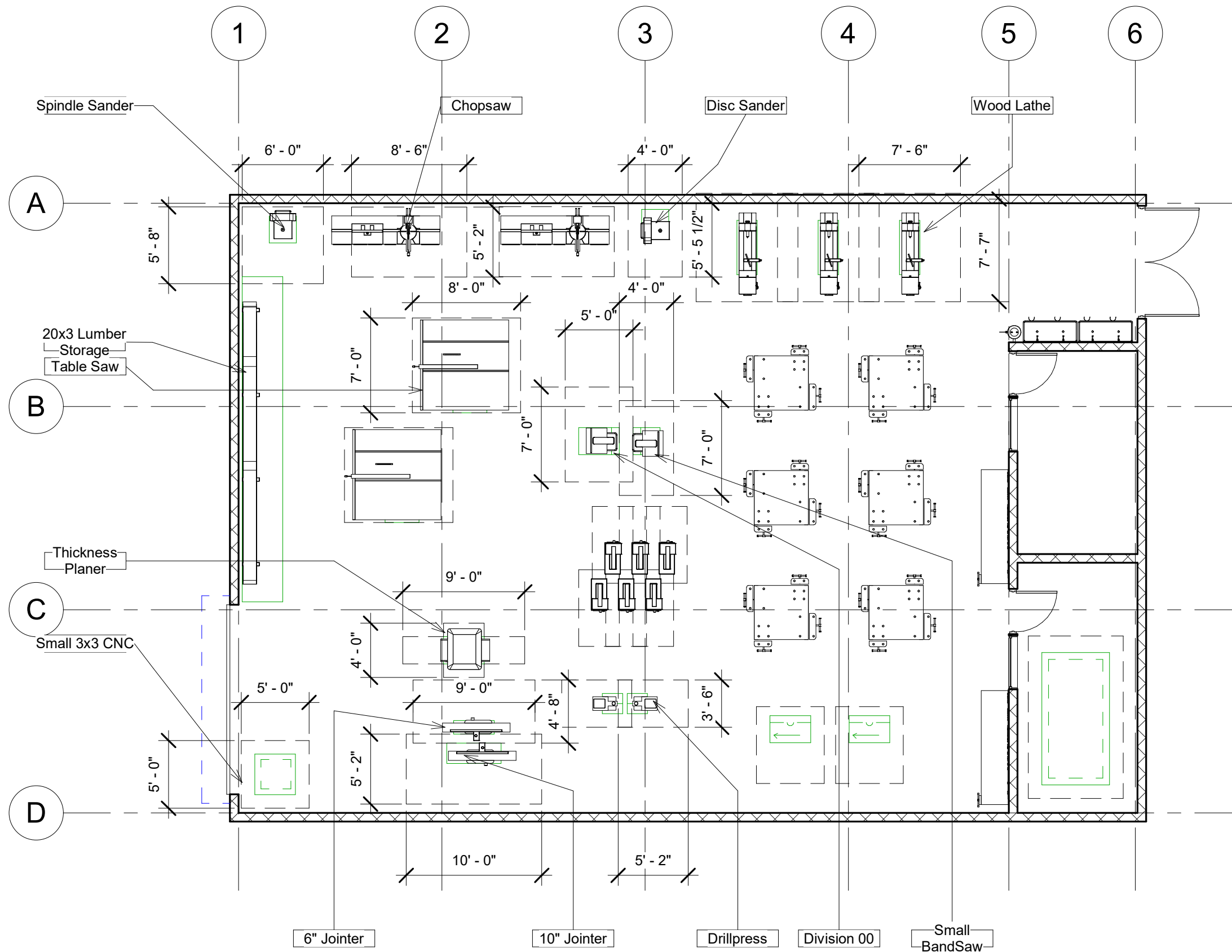
A0

Scale



No.	Description	Date

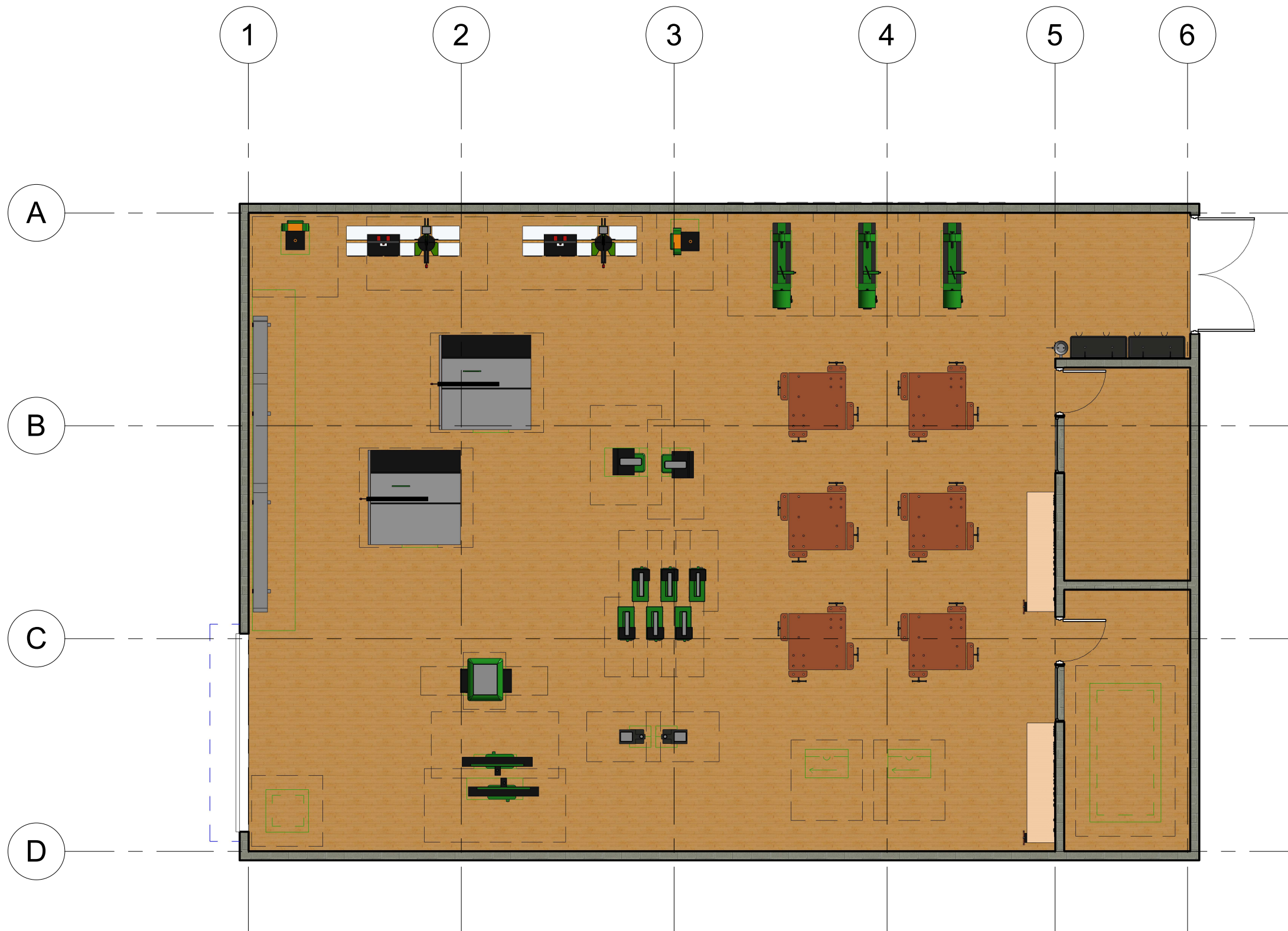
Generic Woodshop Floor Plan		
Project number	V1	<div>A101</div> <div>Scale 1/8" = 1'-0"</div>
Date	June 2017	
Drawn by	Peter Halim	
Checked by	Checker	



No.	Description	Date

Safety Zones		
Project number	V1	<div>A101.1</div> <div>Scale 1/8" = 1'-0"</div>
Date	June 2017	
Drawn by	Peter Halim	
Checked by	Checker	

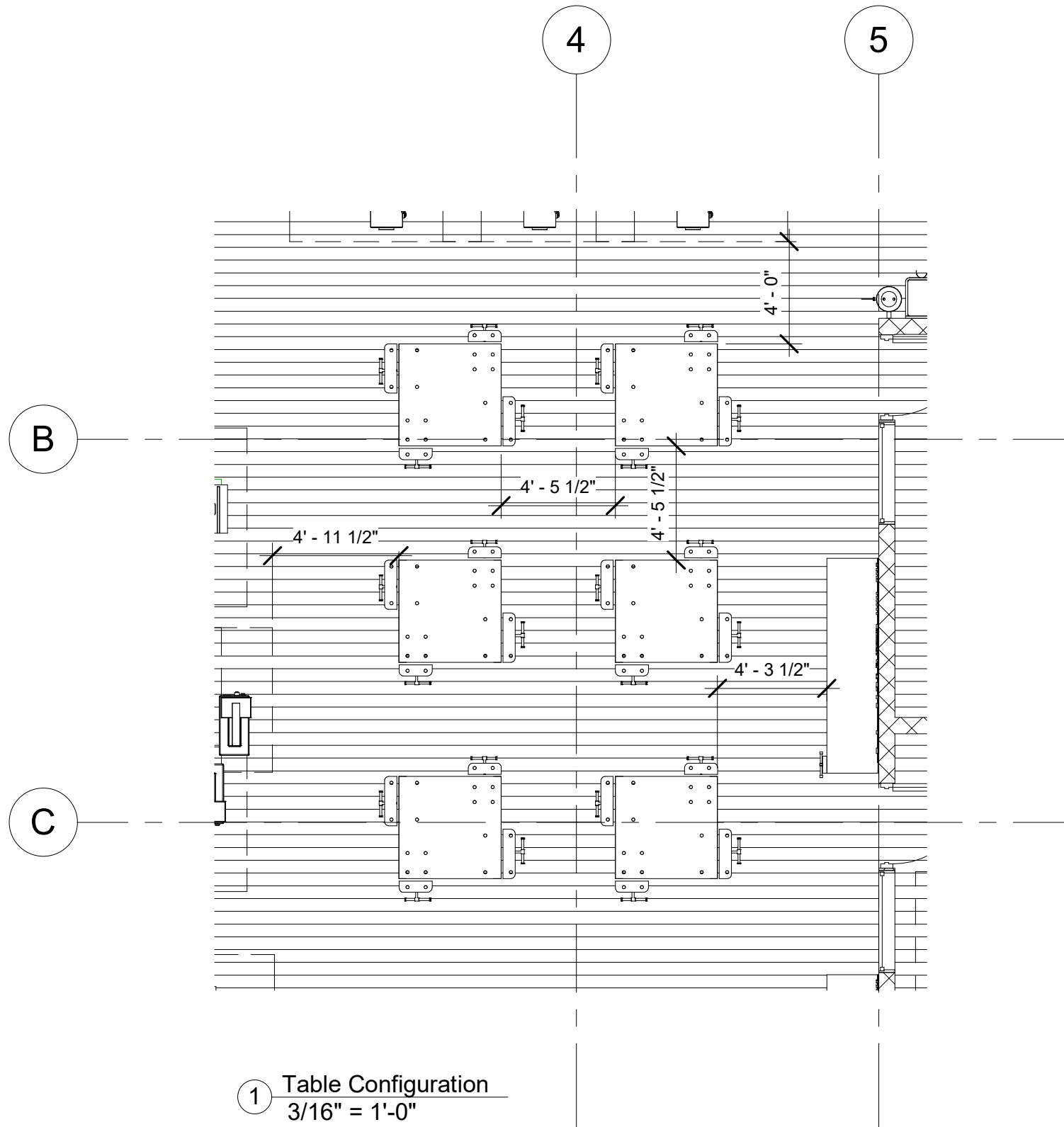




1 Woodshop Floor Plan Detailed  
1/8" = 1'-0"

No.	Description	Date

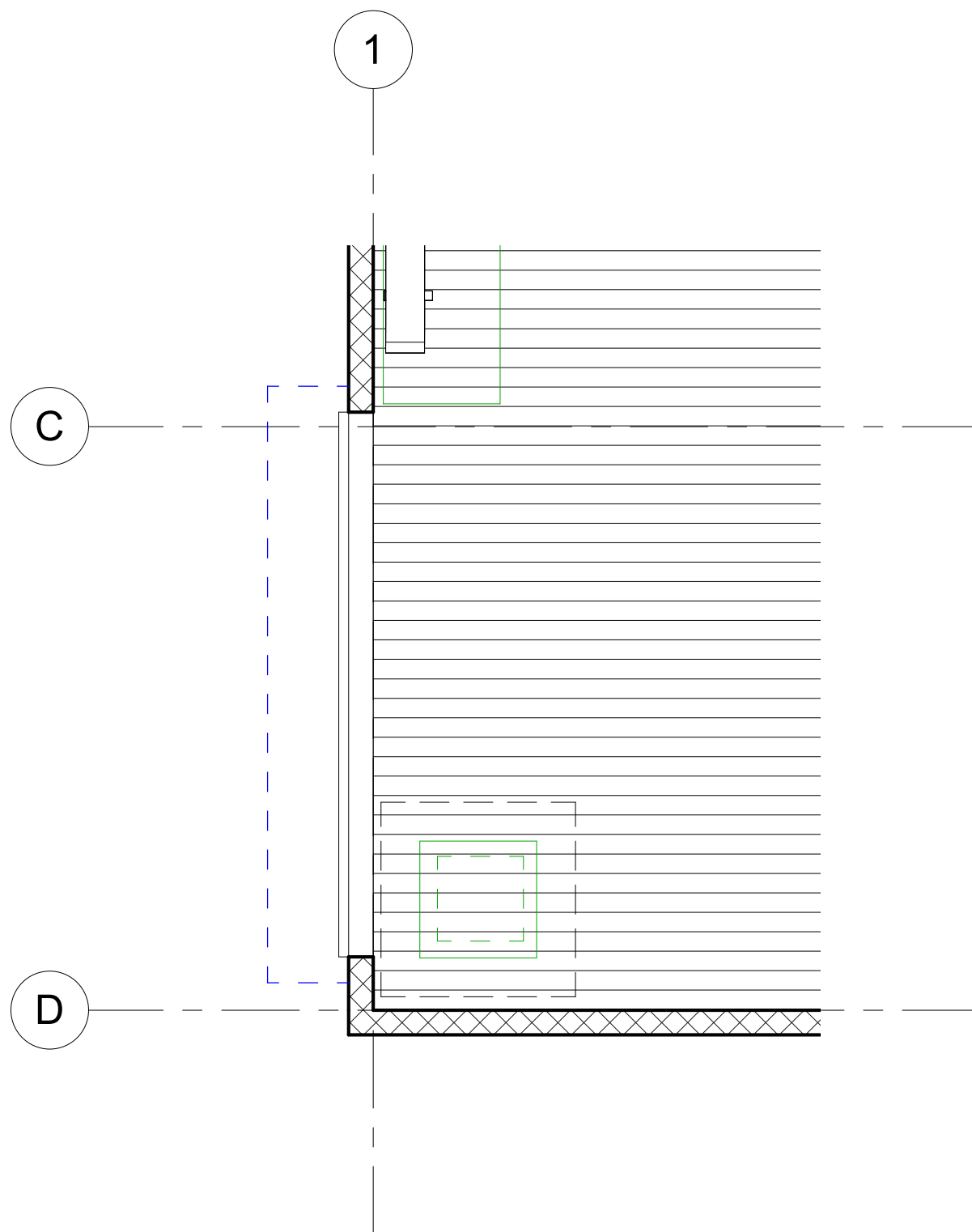
Woodshop Colour Floorplan		
Project number	V1	<b>A102</b> Scale 1/8" = 1'-0"
Date	June 2017	
Drawn by	Peter Halim	
Checked by	Checker	



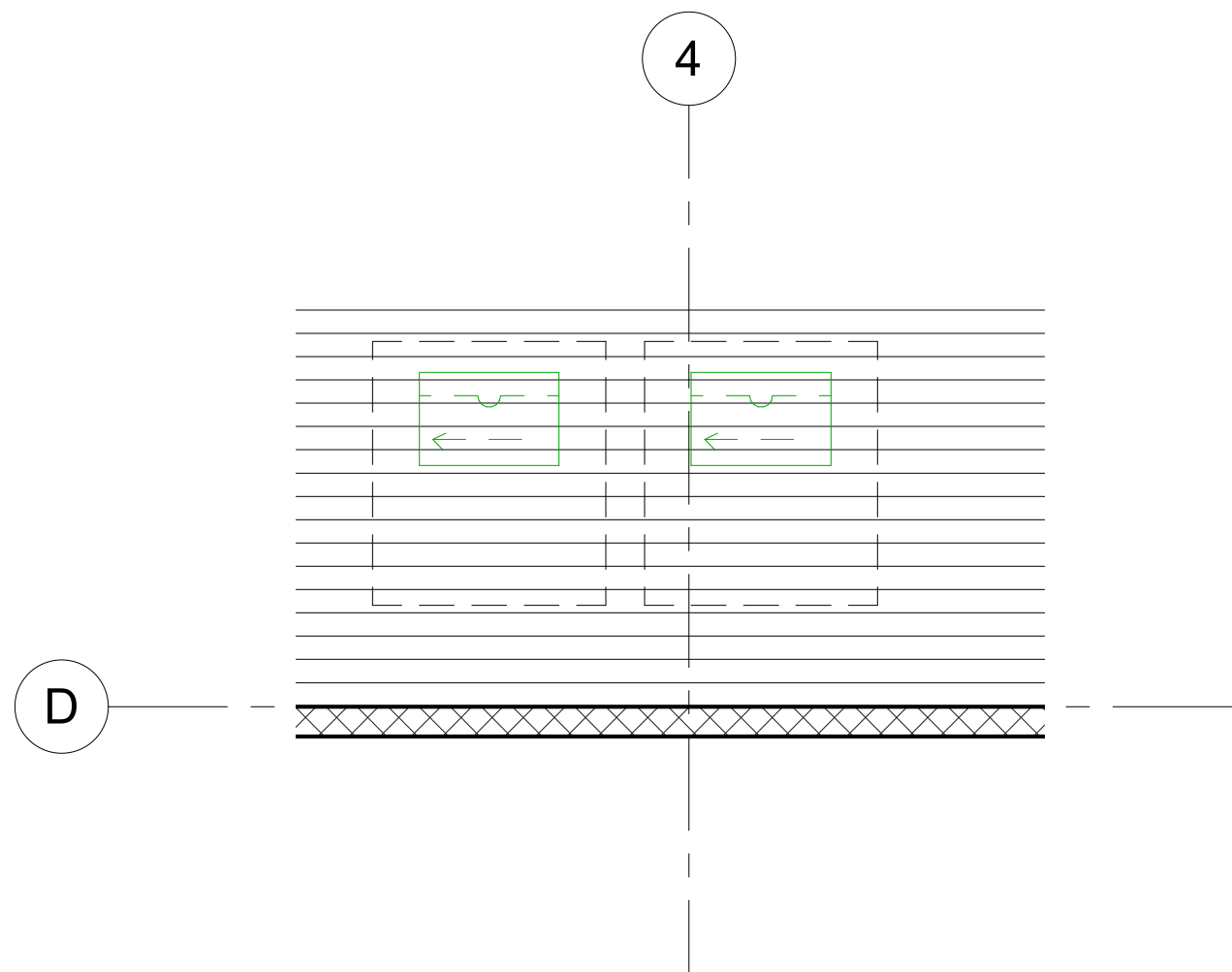
4' by 4' student work tables  
- 4 students per table

No.	Description	Date

Table Layout		
Project number	V1	<b>A103</b> Scale 3/16" = 1'-0"
Date	June 2017	
Drawn by	Peter Halim	
Checked by	Checker	



② Portable CNC / Garage Door  
1/4" = 1'-0"

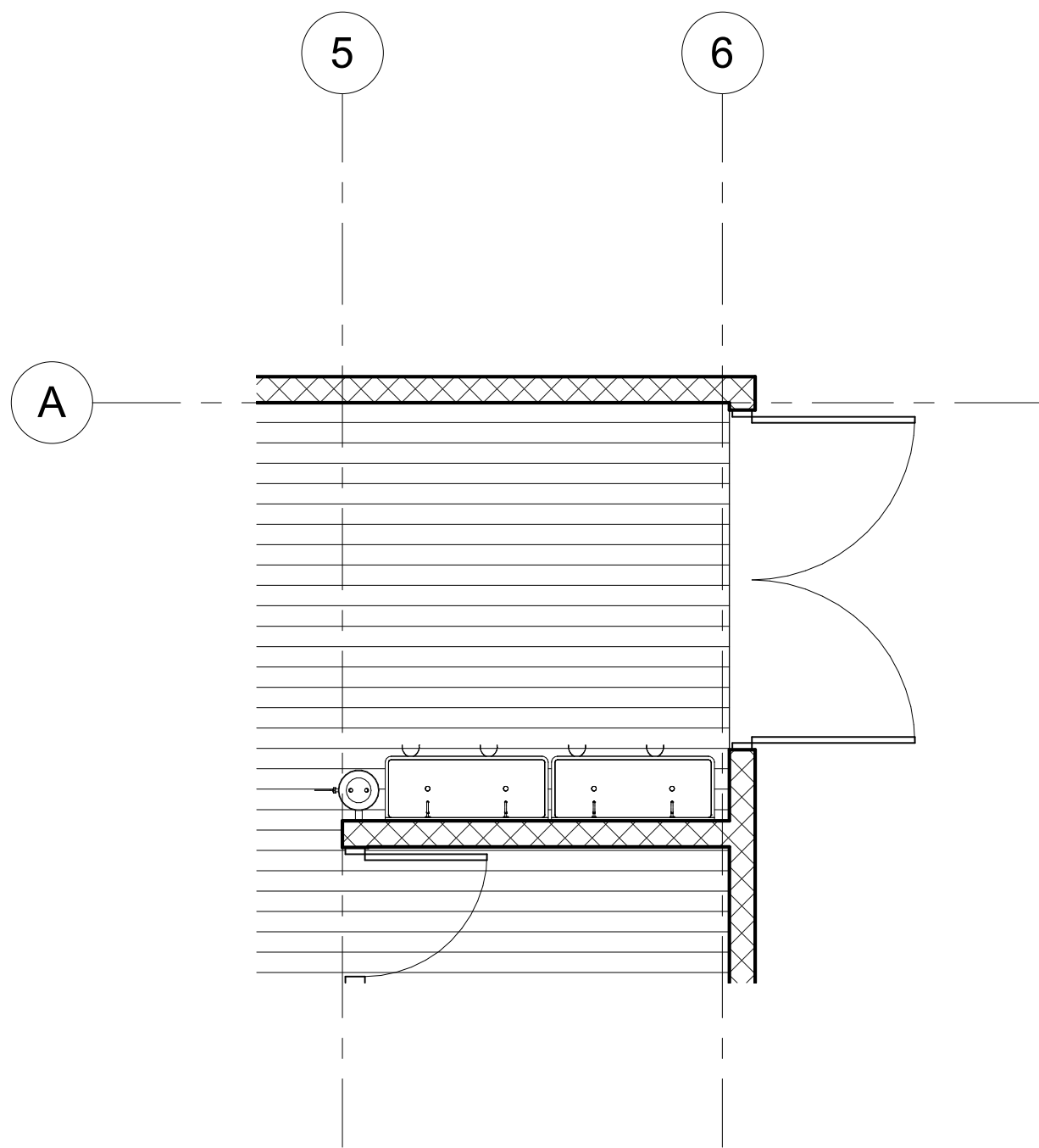


① Portable Router Tables  
1/4" = 1'-0"

No.	Description	Date

Mobile Equipment		
Project number	V1	<b>A104</b> Scale 1/4" = 1'-0"
Date	June 2017	
Drawn by	Peter Halim	
Checked by	Checker	





1 Entrance, Sinks, Eye Wash  
1/4" = 1'-0"



2 Sinks



www.bctea.org

BCTEA

Approved Woodshop Design

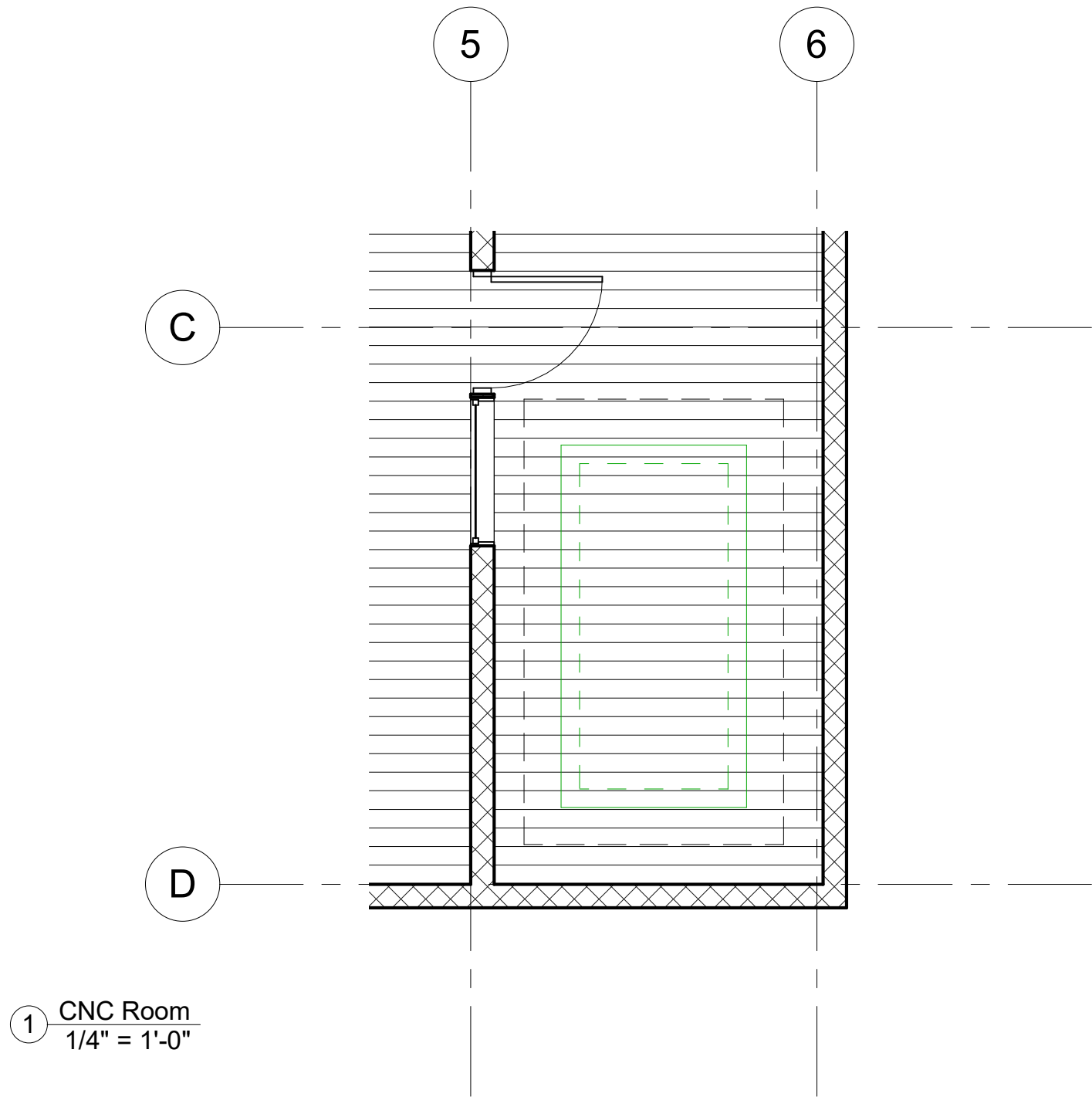
No.	Description	Date

## Sinks and Entrance

Project number	V1
Date	June 2017
Drawn by	Peter Halim
Checked by	Checker

A105

Scale 1/4" = 1'-0"



No.	Description	Date

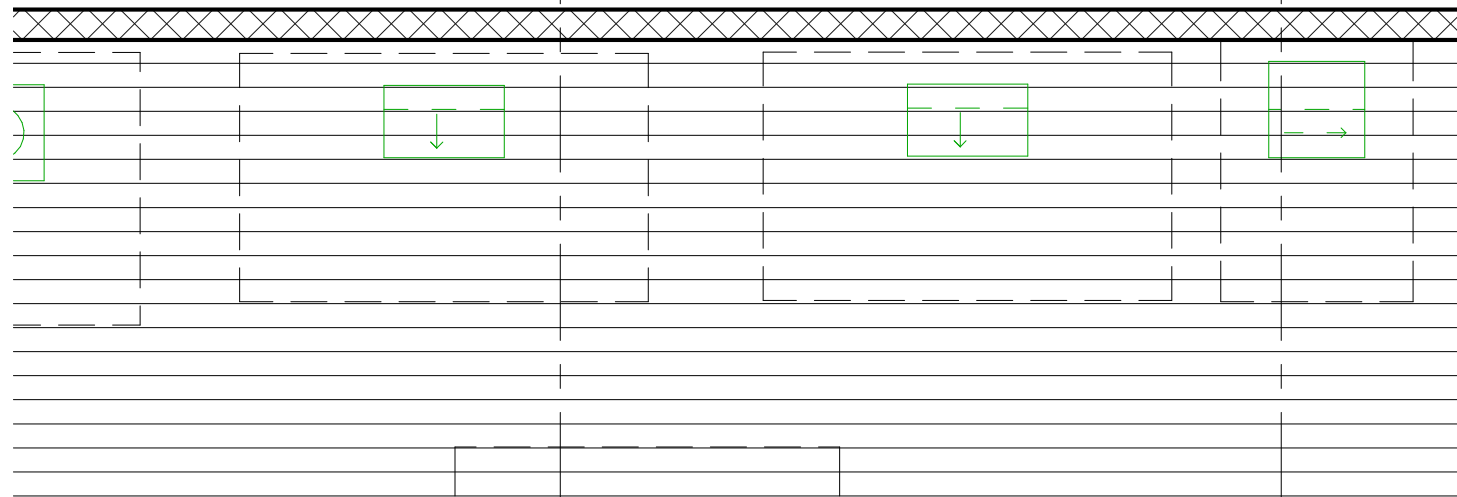
CNC Room		
Project number	V1	<b>A106</b> Scale 1/4" = 1'-0"
Date	June 2017	
Drawn by	Peter Halim	
Checked by	Checker	



A

2

3



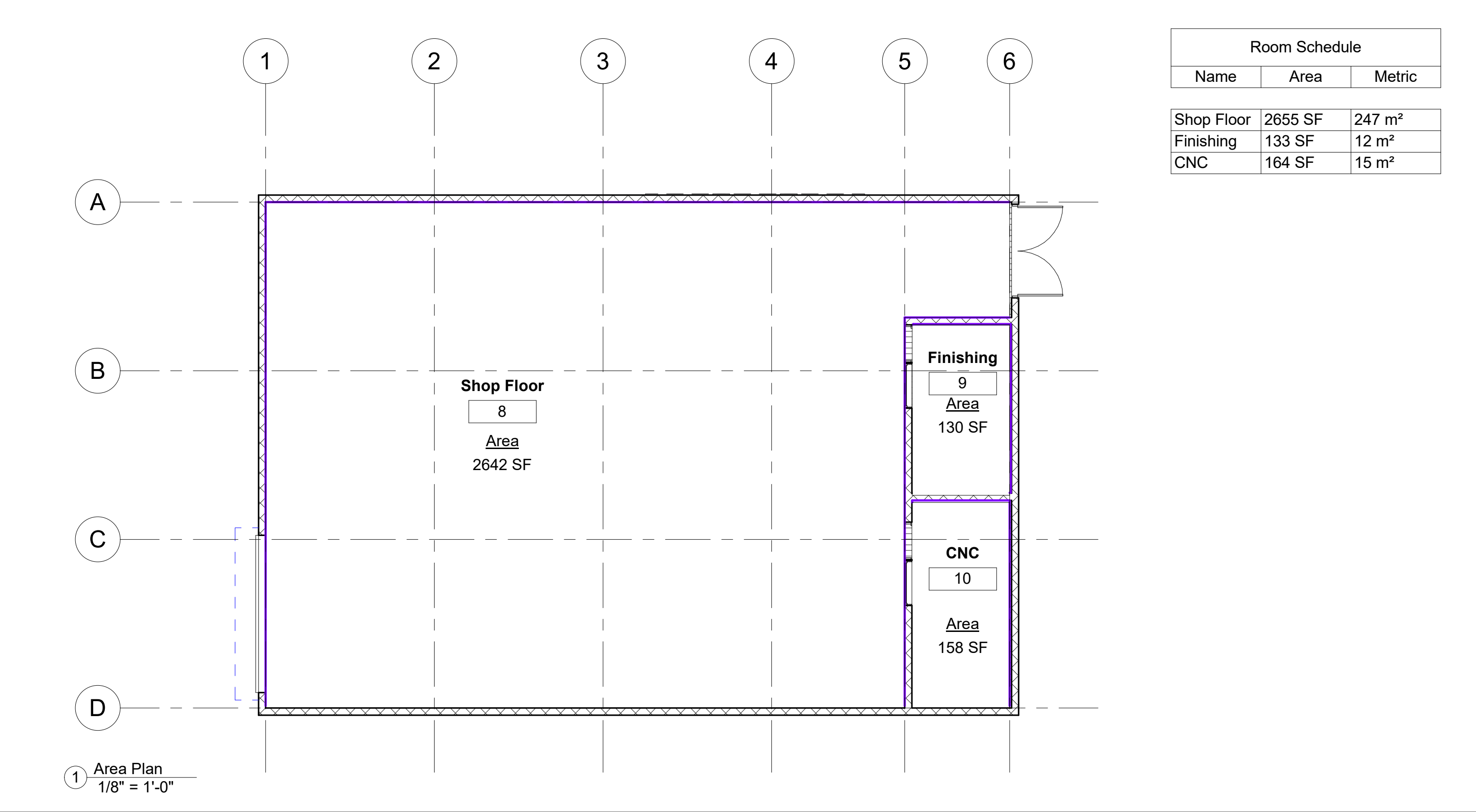
2 Chopsaws  
1/4" = 1'-0"



BCTEA  
Approved Woodshop Design

No.	Description	Date

Chopsaws		
Project number	V1	A107
Date	June 2017	
Drawn by	Peter Halim	
Checked by	Checker	
		Scale 1/4" = 1'-0"

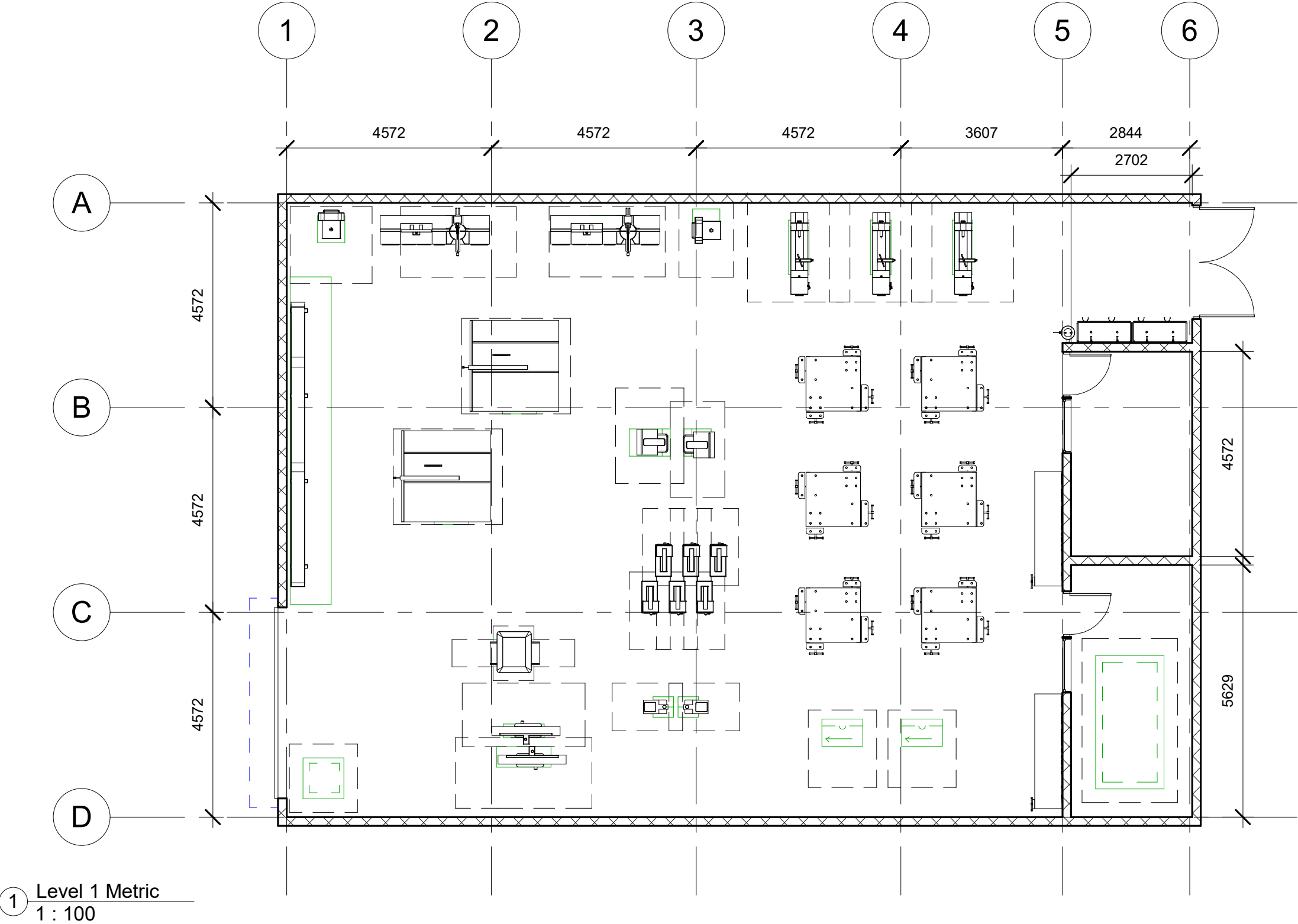


No.	Description	Date

Area		
Project number	V1	A108
Date	June 2017	
Drawn by	Peter Halim	
Checked by	Checker	
		Scale 1/8" = 1'-0"

Room Schedule		
Name	Area	Metric

Shop Floor	2655 SF	247 m²
Finishing	133 SF	12 m²
CNC	164 SF	15 m²





BRITISH COLUMBIA  
TECHNOLOGY EDUCATION ASSOCIATION

www.bctea.org

BCTEA

Approved Woodshop Design

No.	Description	Date

Metric Details		
Project number	V1	A109
Date	June 2017	
Drawn by	Peter Halim	
Checked by	Checker	
		Scale 1 : 100





② Cut Away 2



① Cut Away 1



[www.bctea.org](http://www.bctea.org)

BCTEA

Approved Woodshop Design

No.	Description	Date

### 3D Views

Project number	V1
Date	June 2017
Drawn by	Peter Halim
Checked by	Checker

**A110**  
Scale