

2.2.3 Area Measurement

Room or Module Areas

Room or module area will be measured net within the inside surfaces of main enclosing walls and partitions.

Undefined Boundaries

Sometimes the boundary between circulation and other spaces such as libraries is not clearly defined. For calculation of allowable areas when this is so, passageways shall be assumed to be not less than 2 m wide where circulation is likely.

Mezzanines

With the exception of Industrial Education mezzanine storage, mezzanines shall be measured and considered as normal floor space

2.6.4 Industrial Education Covered Work Area

In addition to the allowable areas for Industrial Education a roofed, fenced, and paved work area not exceeding 65 m² may be added to each construction, mechanics and middle school general shop. The area of the sawdust extraction equipment room may included either in the covered work area or in the construction shop allowable area, at School Board discretion.

Covered work areas shall not be counted within the gross building area.

Gross Area

The gross area of a building floor is defined as the floor area within the inside of the exterior walls, plus a standard allowance calculated by multiplying the building perimeter (measured at the interior face) times 150 mm.

The following area calculations shall be included in the definition of facility gross floor area:

- stair openings, measured at the first floor, including stairs to rooftop penthouses
- elevator and duct shafts measured at each floor
- **mezzanines** including access stairs
- mechanical and electrical spaces, including all penthouse, basement and mezzanine locations (service spaces to be identified separately)
- galleries and suspended walkways, including access stairs
- all other usable or accessible floor areas.

Excluded areas from the calculations are as follows:

- industrial education storage mezzanines
- crawl spaces or service tunnels
- elementary covered play areas
- industrial education covered work areas.

Halim Notes

- floor areas are calculated based on what formulae for occupancy ?
- shops are generic designs (not mandated) and assume a maximum of 24 students in a shop.
- 24 students is the maximum; this number should be lower if said students require special accomodations and/or needs.
 - E.g. a student may require an special education assistance (SEA), therefore the maximum class size should be 23 students and one SEA.

Industrial Education	
Drafting	120 m ²
Technology (existing Electricity/Electronics)	140 m ²
Metalwork (use in determining existing cap.)	200 m ²
Mechanics	230 m ²
Construction (Wood)	275 m ²

Sheet List	
Sheet Number	Sheet Name
A0	Cover Page
A101	Floor Plan
A102	Annotations and Area
A103	Safety Zones
A103.1	Safety Zone Details
A103.2	Safety Zone Details
A104	Section Views
A105	3D Views

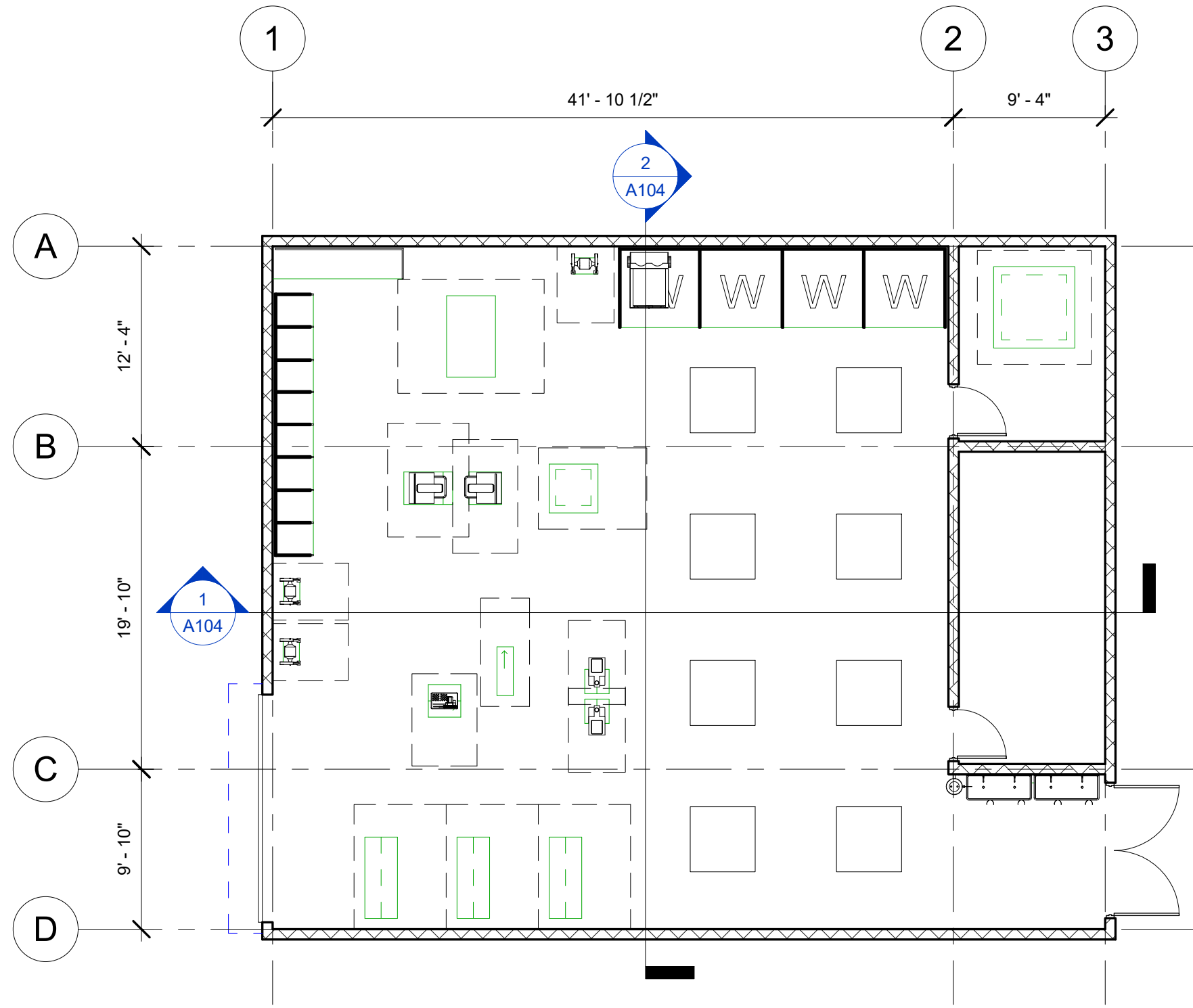


BCTEA

Metal Shop Safety Zones

No.	Description	Date
1	Revision 1	2017
2	For Review	20180929

Cover Page		
Project number	Project Number	<h1>A0</h1>
Date	2017	
Drawn by	Halim	
Checked by	BCTEA	
		Scale



① Floor Plan - Overall Dimensions
1/8" = 1'-0"



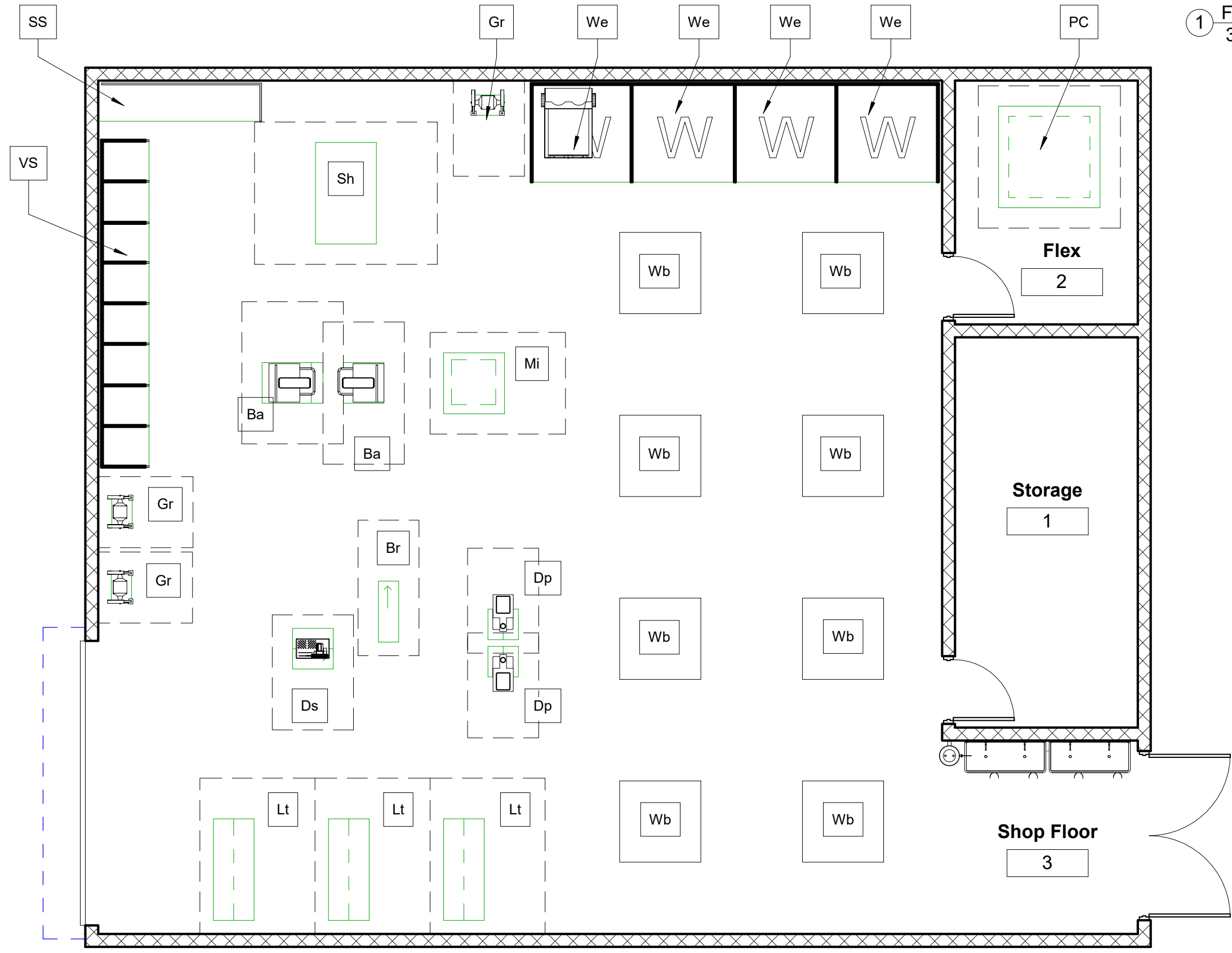
BCTEA

Metal Shop Safety Zones

No.	Description	Date

Floor Plan		A101
Project number	Project Number	
Date	2017	
Drawn by	Halim	
Checked by	Checker	Scale 1/8" = 1'-0"

① Floor Plan - Annotated
3/16" = 1'-0"



Room Schedule		
Name	Area (Imperial)	Area (Metric)
Storage	173 SF	16 m ²
Flex	108 SF	10 m ²
Shop Floor	1822 SF	169 m ²

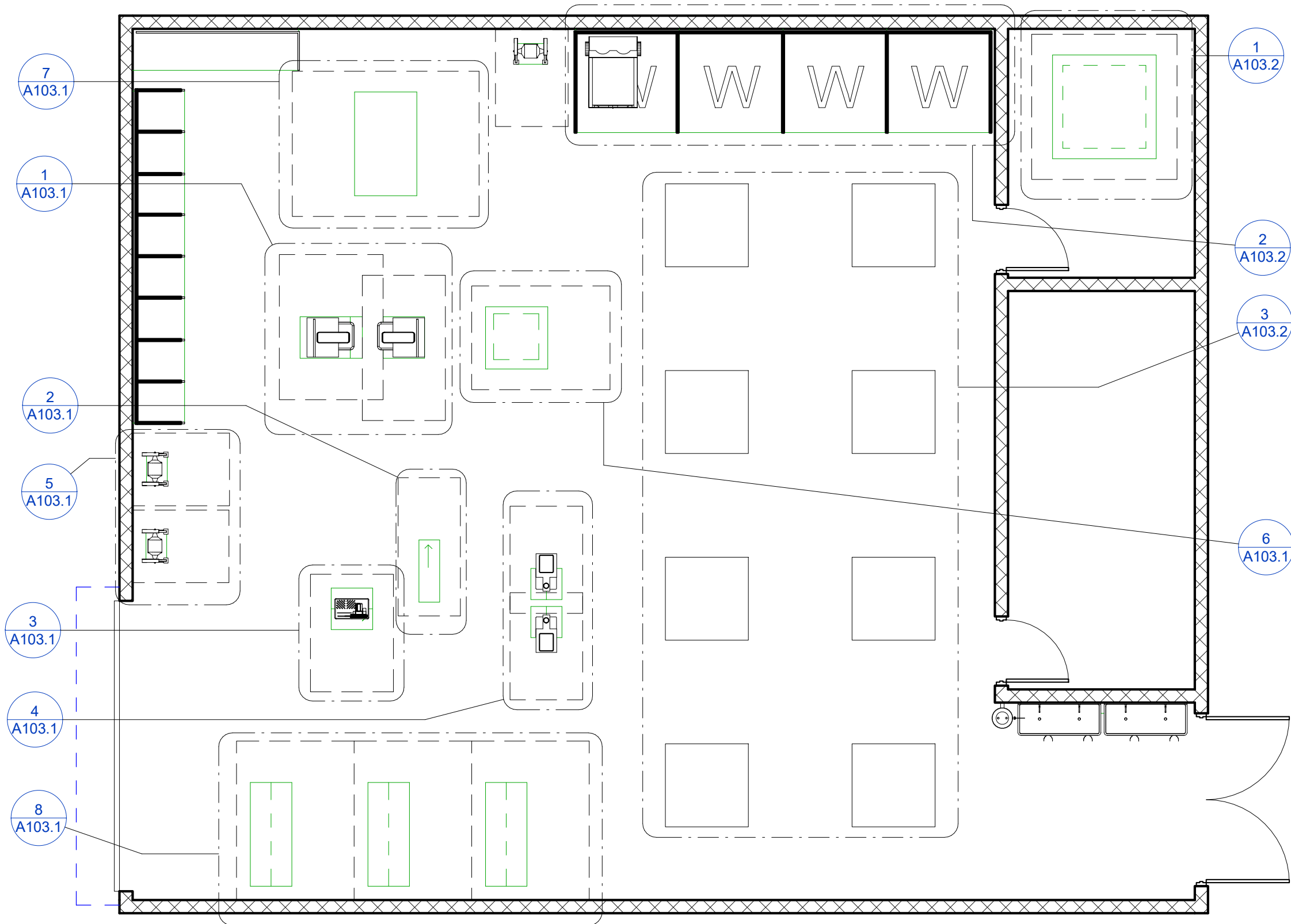
Shop Equipment Legend		
Annotation	Equipment	Count
Ba	Bandsaw	2
Br	Belt Sander	1
Dp	Drill Press	2
Ds	Disc Sander	1
Gr	Pedestal Grinder	3
Lt	Lathe	3
Mi	Mill	1
PC	Plasma CNC	1
Sh	Shear	1
SS	Sheet Storage	1
VS	Vertical Storage	1
Wb	Work Bench	8
We	Welder	4



BCTEA Metal Shop Safety Zones

No.	Description	Date

Annotations and Area		
Project number	Project Number	<h1>A102</h1>
Date	2017	
Drawn by	Halim	
Checked by	Checker	
		Scale 3/16" = 1'-0"



1 Floor Plan - Safety Zones
3/16" = 1'-0"

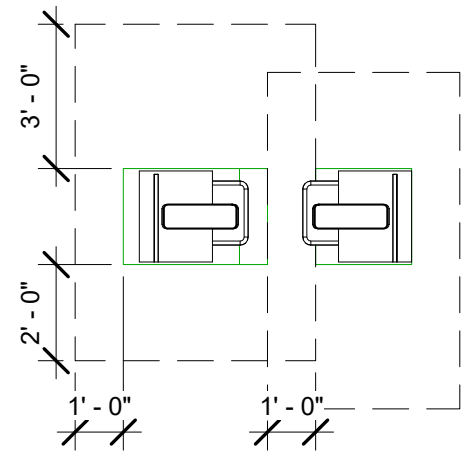


BCTEA

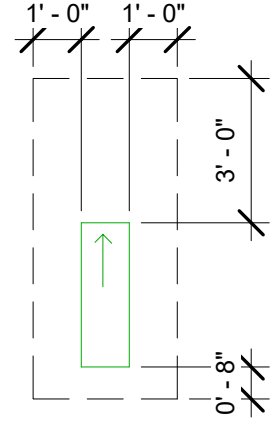
Metal Shop Safety Zones

No.	Description	Date

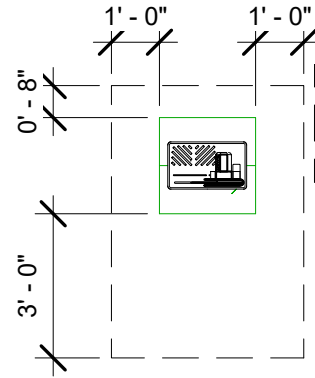
Safety Zones		A103
Project number	Project Number	
Date	2017	
Drawn by	Halim	
Checked by	Checker	Scale 3/16" = 1'-0"



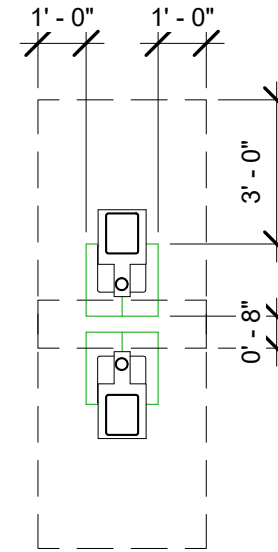
① SZ - Bandsaw
1/4" = 1'-0"



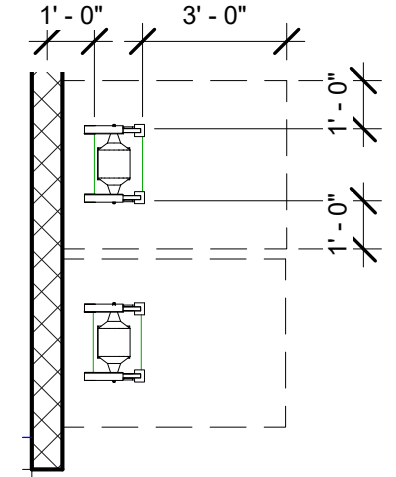
② SZ - Belt Sander
1/4" = 1'-0"



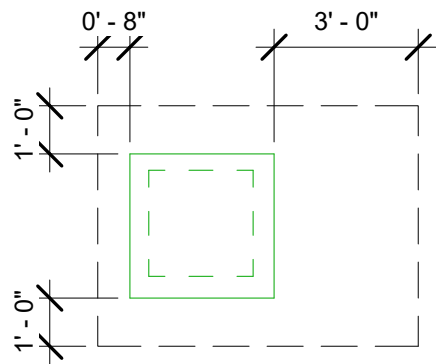
③ SZ - Disc Sander
1/4" = 1'-0"



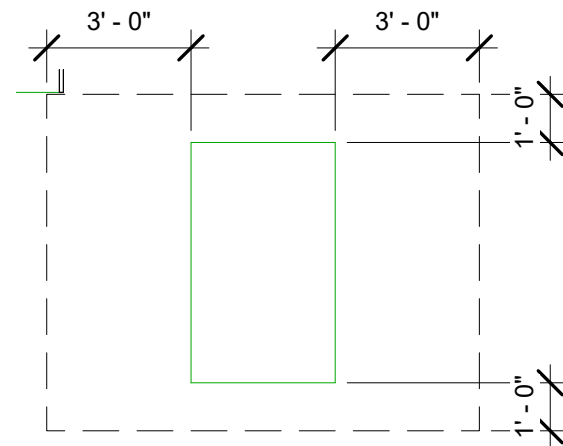
④ SZ - Drill Press
1/4" = 1'-0"



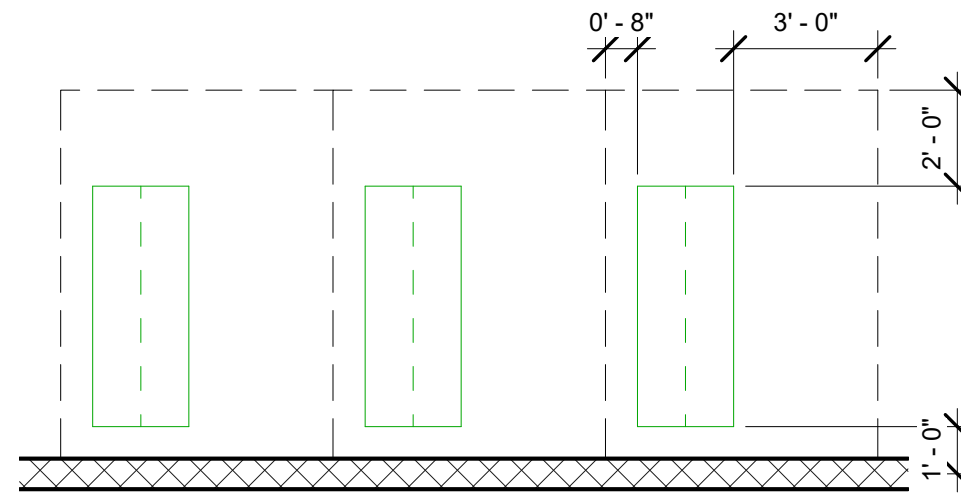
⑤ SZ - Pedestal Grinder
1/4" = 1'-0"



⑥ SZ - Mill
1/4" = 1'-0"



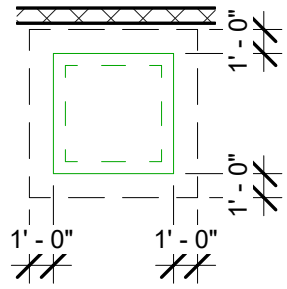
⑦ SZ - Shear
1/4" = 1'-0"



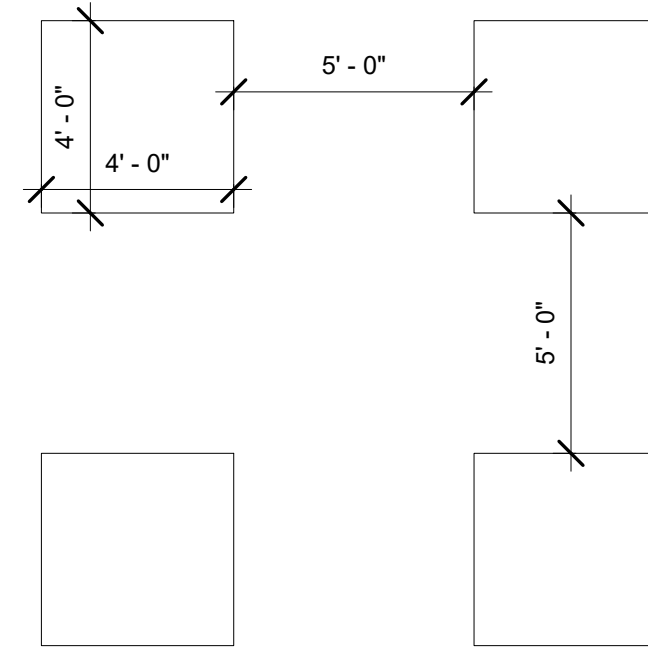
⑧ SZ - Lathe
1/4" = 1'-0"

No.	Description	Date

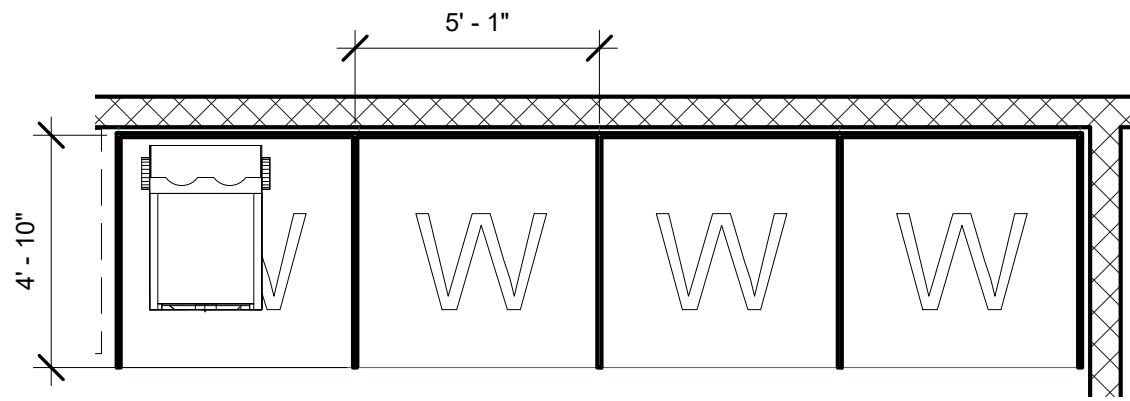
Safety Zone Details		A103.1
Project number	Project Number	
Date	2017	
Drawn by	Halim	
Checked by	Checker	Scale 1/4" = 1'-0"



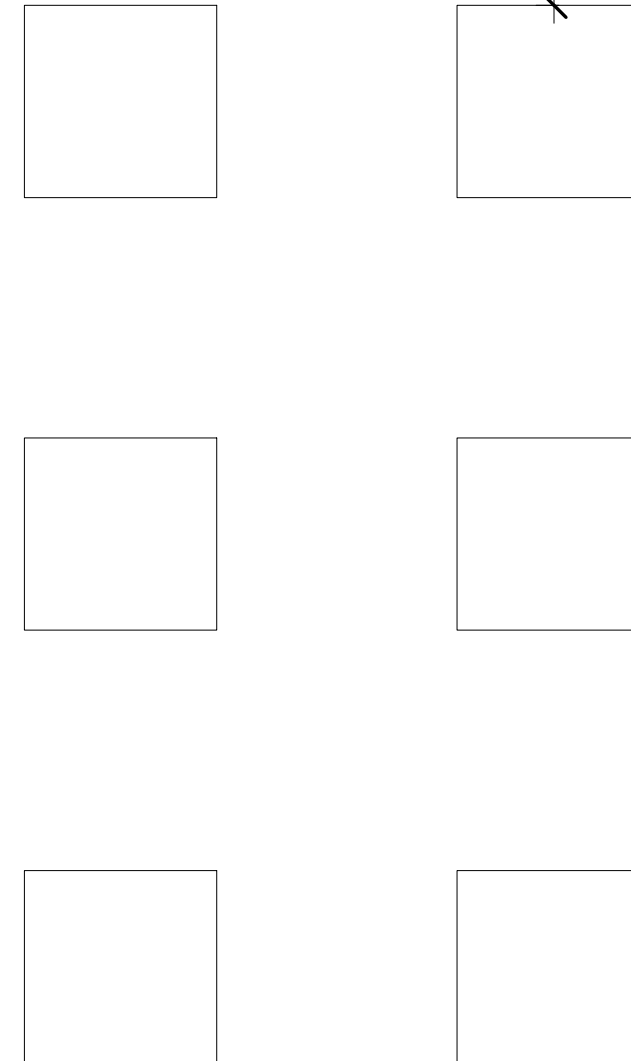
① SZ - CNC Plasma
1/8" = 1'-0"



③ SZ - Work Benches
1/4" = 1'-0"

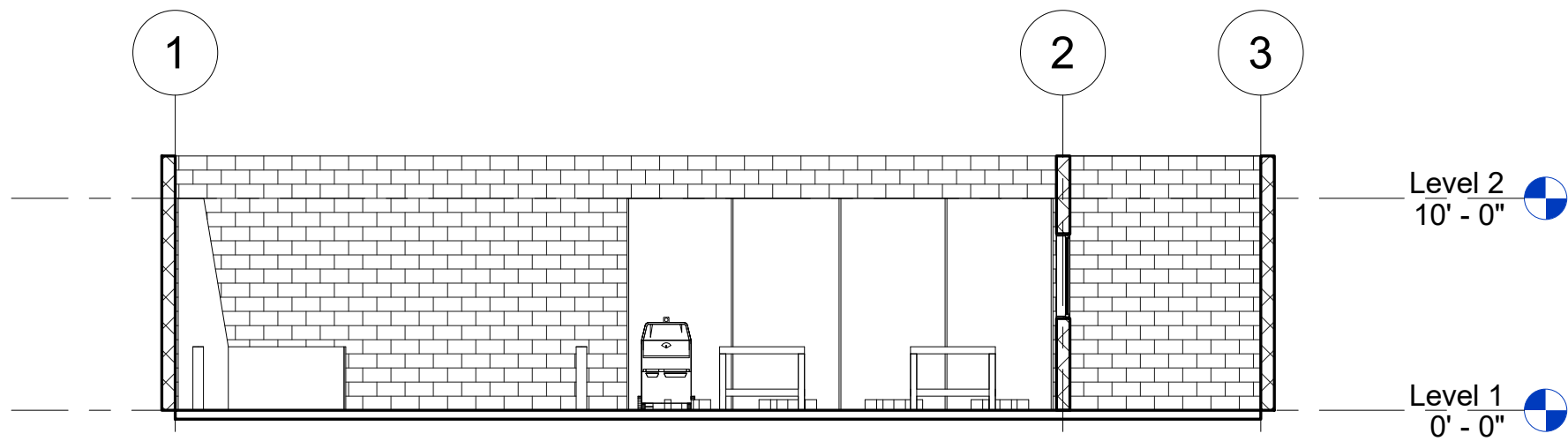


② SZ - Welding
1/4" = 1'-0"

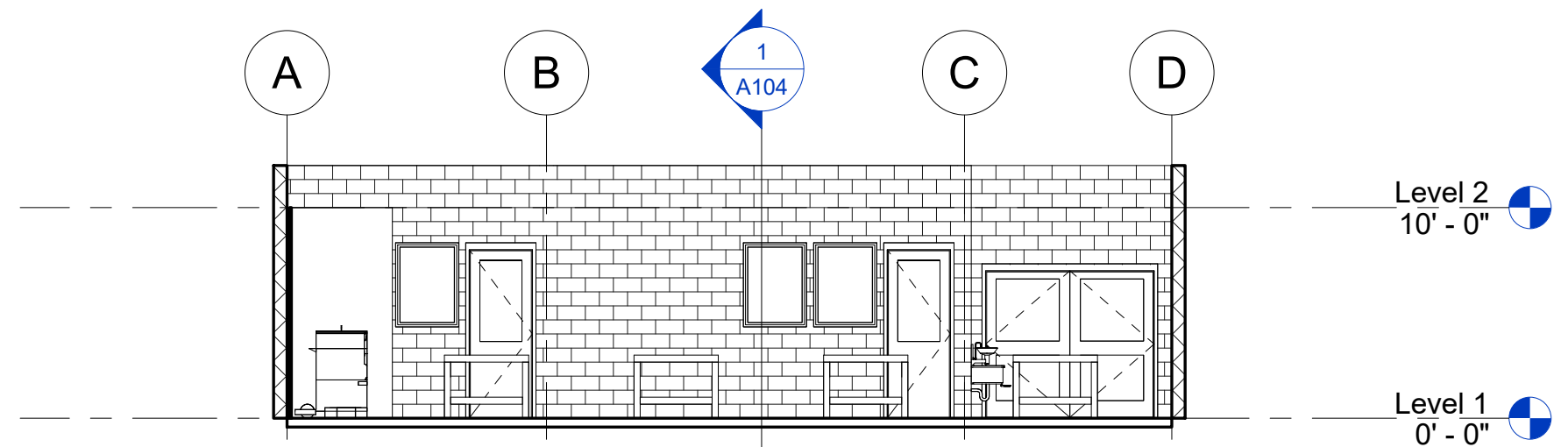


No.	Description	Date

Safety Zone Details		
Project number	Project Number	<h1>A103.2</h1>
Date	2017	
Drawn by	Halim	
Checked by	Checker	
Scale As indicated		



① Section 1
1/8" = 1'-0"



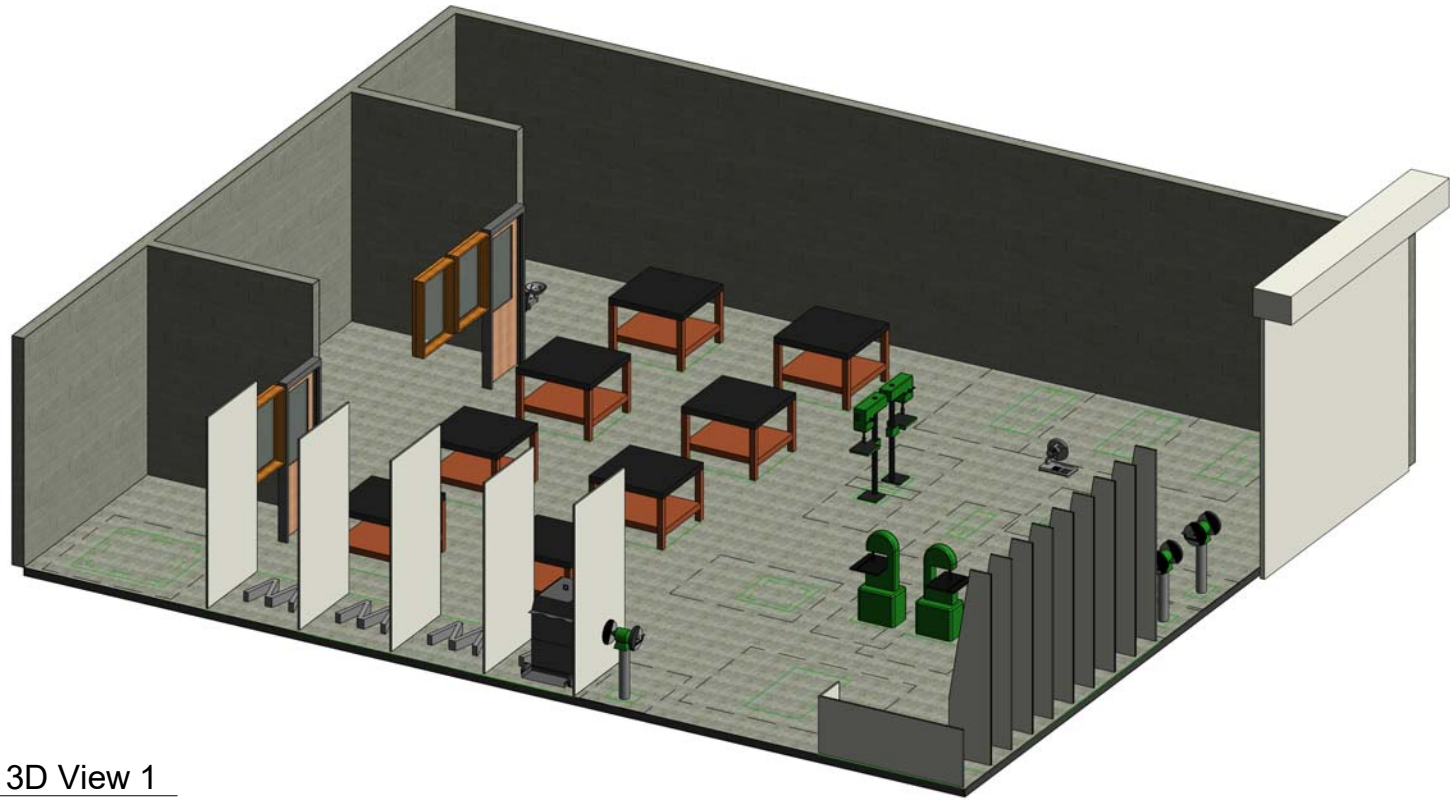
② Section 2
1/8" = 1'-0"



BCTEA Metal Shop Safety Zones

No.	Description	Date

Section Views		A104
Project number	Project Number	
Date	2017	
Drawn by	Halim	
Checked by	Checker	Scale 1/8" = 1'-0"



① 3D View 1
12" = 1'-0"



② 3D View 2
12" = 1'-0"



www.bctea.org

BCTEA

Metal Shop Safety Zones

No.	Description	Date

3D Views

Project number	Project Number
Date	2017
Drawn by	Halim
Checked by	Checker

A105

Scale 12" = 1'-0"